
SRM User Guide: Installing the FlashArray Storage Replication Adapter

In order for Site Recovery Manager to failover virtual environments, the persistence layer of the environments needs to be readied at the target site. The persistence layer refers to the storage-which is protected by array-based replication. The process of "readying" is typically called a failover. A failover is usually comprised of a few steps, synchronizing the data on the target side with the source side, making the source side inaccessible, making the target side accessible, and vendor-specific operations that surround those operations. Since all vendors implement their replication differently (and have correspondingly heterogeneous APIs) VMware implemented a translation layer for SRM that provides a common set of APIs for communication across all vendors. This layer is implemented as a plugin by the storage vendor and within it is where vendor-specific operations are executed. This translation layer is called a Storage Replication Adapter--usually abbreviated as an SRA. The SRA receives SRM specific API calls (synchronize a data set for instance) and then issues that to the array in a way that array understands.

The vendor creates the SRA, certifies it via a specific VMware-provided test suite, then makes the SRA available to customers for download. SRM does not come packaged with these SRAs, so a customer must download it then install it into the SRM environment.

SRM comes in two varieties, a Windows-based implementation and a Linux-based appliance implementation. The process to install the SRA is slightly different for each version so the process for each will be outlined on this page.

Downloading the SRA

To download the SRA, go to the quick reference page:

[Site Recovery Manager Quick Reference](#)

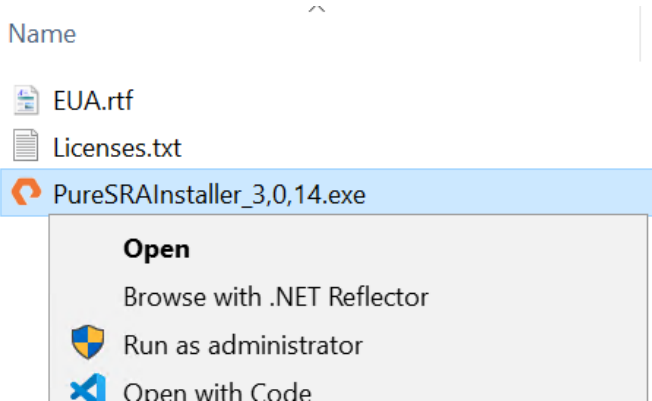
There are two options for downloading, Windows or Photon (Linux). Note that throughout this guide Linux and Photon will be used interchangeably. Select the correct version and download the corresponding zip or tar file.

To verify you indeed have downloaded the latest available version, please refer to the VMware compatibility guide which can be found here:

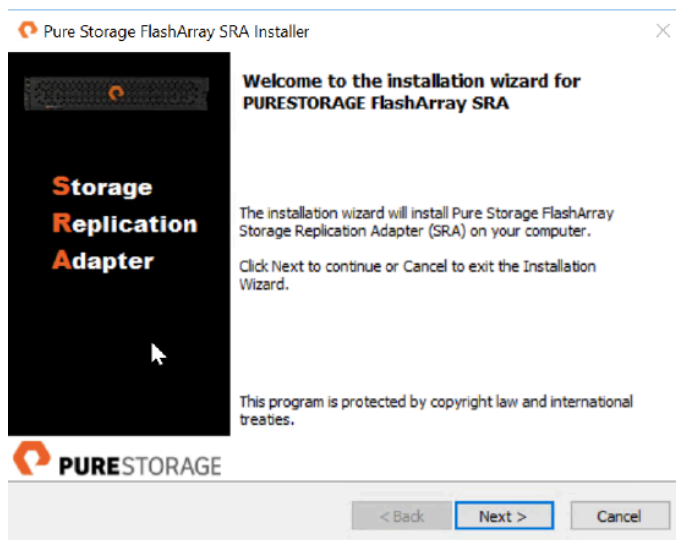
https://www.vmware.com/resources/compatibility/search.php?deviceCategory=sra&details=1&partner=399&page=1&display_interval=10&sortColumn=Partner&sortOrder=Asc

Installing the SRA with Windows-based SRM

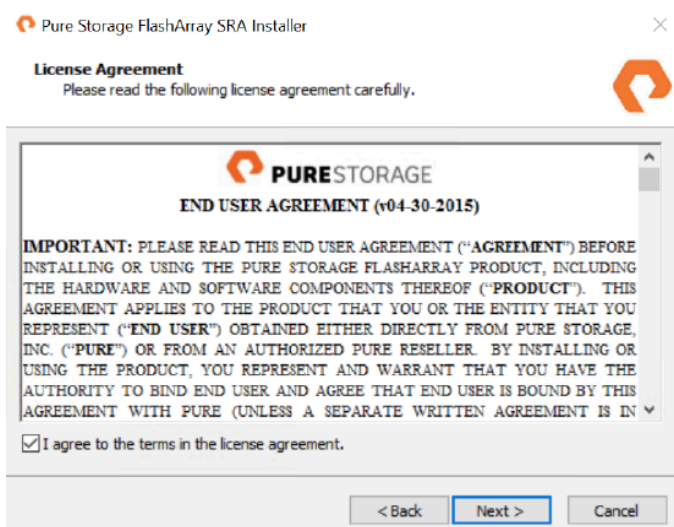
Download the zip file for the Windows-based SRM offering. Extract or open the zip file. Navigate to the .exe file and right-click it and run it.



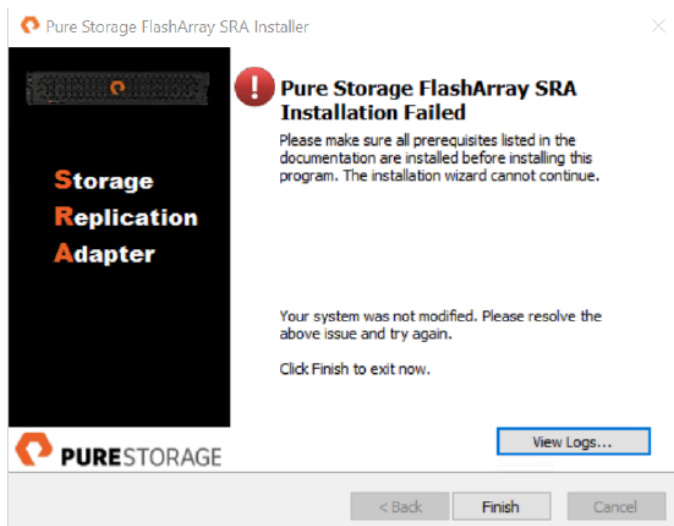
Once the installer appears, click Next to start the installation wizard:



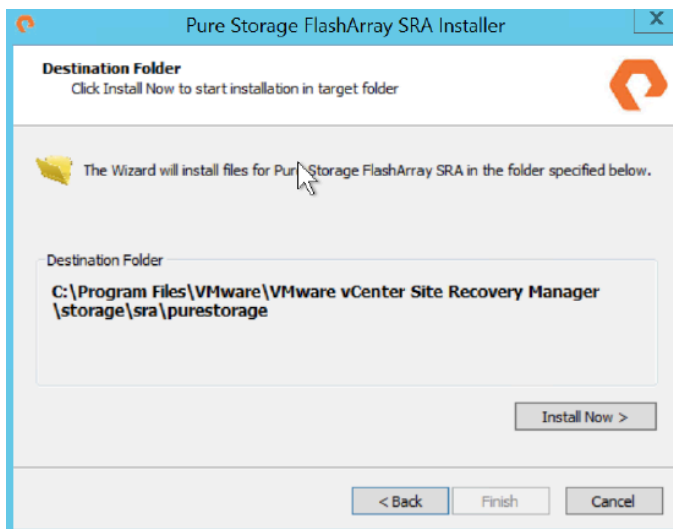
Accept the EULA and click Next again:



If there is an issue, the installer will fail on the next page prior. The installer checks for a few pre-requisites and if they are not present the process will fail. The most common being that SRM is not yet installed. Ensure that SRM is installed on this Windows machine and restart the process.



To view the reason for the failure, click on the View Logs button and scroll to near the bottom of the log file to view the exception. If there are no issues the installation can be started. Click Install Now to begin the process.



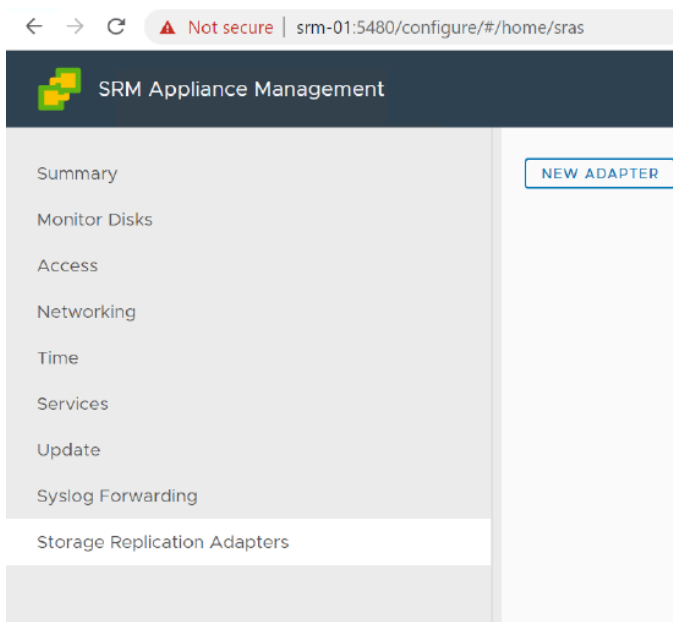
If there are no issues with installation, the process will complete quickly and report success. Click Finish to exit the wizard.

Repeat this process on **both** Site Recovery Manager servers. Ensure that the exact same SRA version is installed on both SRM servers as well.

Installing the SRA with Linux-based SRM

Download the zip file for the Linux-based SRM offering. Extract the files to a local folder. Navigate to the admin page of the SRM server with your chosen web browser. The web address is <https://<srm server>:5480>. The default user is admin with a password you selected upon deployment of SRM.

Click on the left-hand side panel listing for Storage Replication Adapters.



Click on the New Adapter button that appears on the right of the panel.

New Adapter

Select a storage replication adapter archive.

File Name *no file selected*

Click Upload and navigate to the extracted folder of the downloaded SRA. Choose the .tar file. If you only see an .exe file ,you downloaded the Windows version, not the Linux release. Re-download the correct SRA if so.

Select the tar file and click Upload.

New Adapter

Uploading puresra_3.0.154+b647382.tar...

18%

Once the process completes, the SRA will properly report in SRM:

Pure Storage FlashArray SRA	
Version	3.0.154
Vendor	Pure Storage
Vendor URL	http://support.purestorage.com
Repository tags	puresra:latest
Docker image ID	sha256:a7d1c6b2045f488b9ddcce9b59fced4666e8e94705b9735cc93c941176c4d7c

Repeat this process on **both** Site Recovery Manager servers. Ensure that the exact same SRA version is installed on both SRM servers as well.